

Inclusion traffic lights

THE INCLUSION TRAFFIC LIGHTS HELP US THINK ABOUT THE PLACES PEOPLE GO AND THE PEOPLE THEY CONNECT WITH. SOMETIMES PEOPLE NEED SPECIALIST SUPPORT, BUT THAT DOESN'T MEAN THEY SHOULD FIND THEMSELVES EXCLUDED FROM THE OPPORTUNITIES OTHERS BENEFIT FROM. WE CAN DEFINE COMMUNITIES AS PLACES THAT PEOPLE COME TOGETHER.

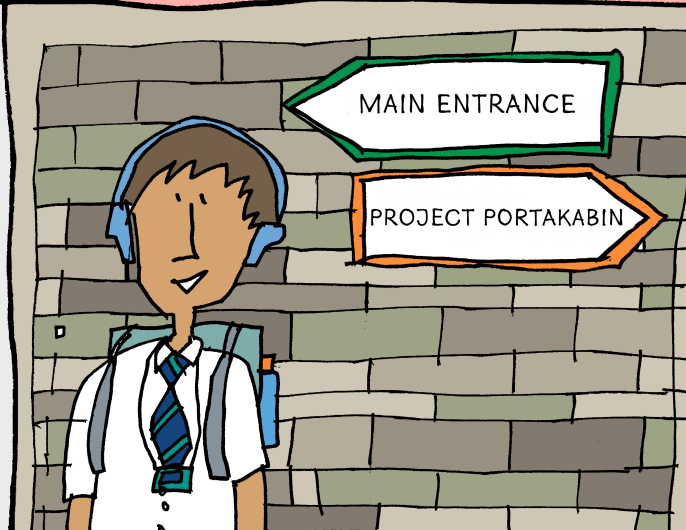
SPECIALIST
PLACE
DISABILITY
GROUP

COMMUNITY
PLACE:
DISABILITY
GROUP

COMMUNITY
PLACE:
USED BY
EVERYONE



AFTER AN HOUR ON THE MINIBUS MO GOES TO BASE GROUP AT HIS SPECIAL SCHOOL.



MO'S OFF TO HIS LESSON IN THE SPECIAL NEEDS PORTAKABIN IN THE MAIN STREAM SCHOOL.



MO IS SUPPORTED TO JOIN IN A GCSE SCIENCE PRACTICAL.



NADIA MAKES HER OWN LUNCH IN THE LIFE SKILLS SESSION AT THE DAY CENTRE.



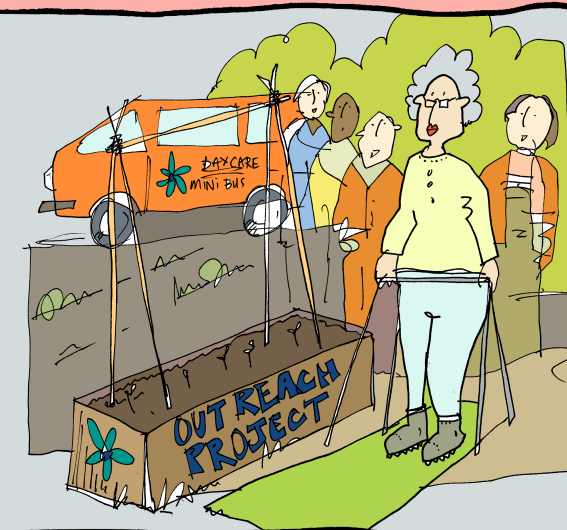
BETWEEN 10AM-2PM NADIA VOLUNTEERS AS A COOK AT THE DISABILITY DROP-IN CAFE.



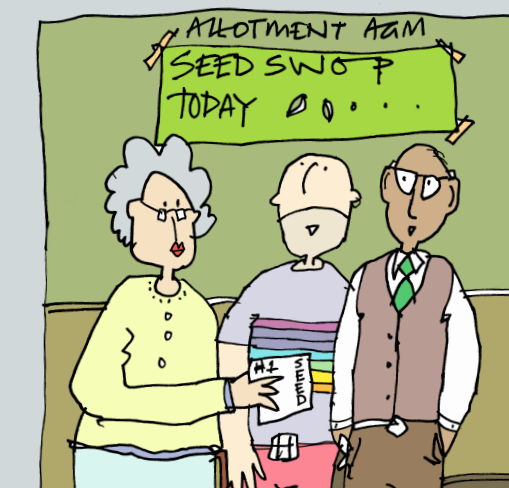
NADIA WORKS IN THE KITCHEN AT A LOCAL PUB.



RESIDENTS LOVED TO WATCH BRENDA SORTING OUT THE HERB WINDOW BOX AT THE CARE HOME.



BRENDA WAS THE FIRST TO CHECK THE RUNNER BEANS ON THE OUTREACH PROJECT.



IT WAS THE FIRST TIME BRENDA HAD SEEDS TO SWAP AT THE ALLOTMENT AGM MEETING.